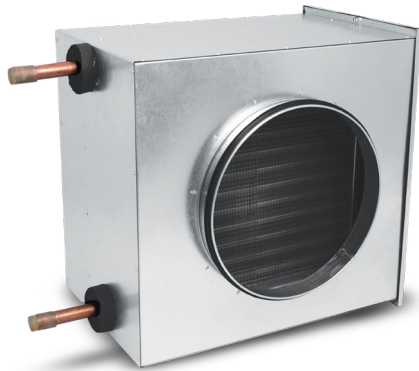


Water heater

HDW



Description

HDW water heaters provide warm air in ventilation ductwork systems. The heating medium is water.

All HDW water heaters have an enclosure provided with an access cover to facilitate inspection and cleaning of the heat exchanger.

The HDW water heater features two round stub pipes with EPDM gaskets.

The housing is made from galvanized steel sheet. The water coil and stub pipes are made from copper; the heat exchanger fins are made from aluminium.

Maximum operating temperature: +100 °C

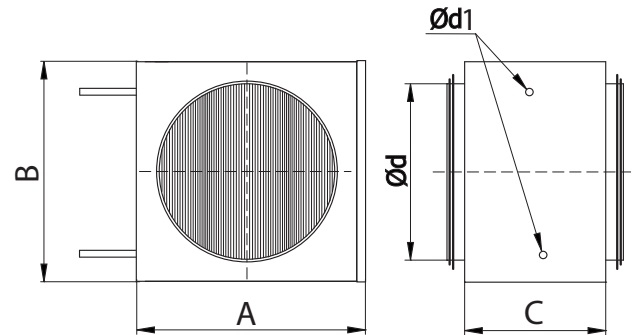
Maximum operating pressure: 1.0 MPa (10 bar)

Product code example

Product code: **HDW - 160**

type _____
 Ød _____

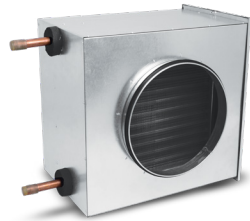
Dimensions



Type	Ød [mm]	A [mm]	B [mm]	C [mm]	Ød ₁ [mm]
HDW-100	100	215	190	220	9,52
HDW-125	125	215	190	220	9,52
HDW-150	150	290	265	220	12,0
HDW-160	160	290	265	220	12,0
HDW-200	200	290	265	220	12,0
HDW-250	250	395	365	260	18,0
HDW-315	315	460	440	260	18,0
HDW-400	400	560	525	270	18,0
HDW-500	500	740	650	270	22,0

Water heater HDW

Available combinations



HDW water heater

+



C215Q-J 2-way valve

+

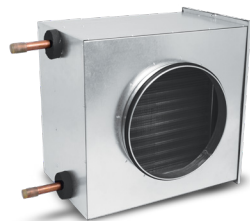


CQ230A actuator

+



LCA-D indoor thermostat



HDW water heater

+



R3..xx-B.. 3-way valve

+



TRY230 actuator

+



LCA-D indoor thermostat

Selection of valves for heaters

2-way control valves with adjustable kvs, DN15-20

Heater type	Max. power (kW)	Max air output (l/s)	Press. loss (kPa)	Max. temp. (°C)	Max. press. loss over valve (kPa)	DN (mm)	Valve type	kvs m ³ /h / actuator setting	On/Off 230V AC actuator
HDW-100	3.46	0.04	6.23	90	13	15	C215Q-J	0.4 / 1	CQ230A
HDW-125	4.67	0.05	10.99	90	9	15	C215Q-J	0.6 / 2	CQ230A
HDW-150	7.67	0.09	7.23	90	10	15	C215Q-J	1.0 / 3	CQ230A
HDW-160	8.33	0.10	8.43	90	13	15	C215Q-J	1.0 / 3	CQ230A
HDW-200	11.11	0.14	14.54	90	25	15	C215Q-J	1.0 / 3	CQ230A
HDW-250	18.26	0.22	15.66	90	16	15	C215Q-J	2.0 / 5	CQ230A
HDW-315	29.03	0.36	26.79	90	20	15	C215Q-J	2.9 / 6	CQ230A
HDW-400	45.26	0.55	31.86	90	25	15	C215Q-J	4.0 / N	CQ230A
HDW-500	66.68	0.82	40.13	90	27	20	C220Q-K	5.7 / N	CQ230A

Water heater

HDW

Selection of valves for heaters

3-way control valves, DN15-20									
Heater type	Max. power (kW)	Max air output (l/s)	Press. loss (kPa)	Max. temp. (°C)	Max. press. loss over valve (kPa)	DN (mm)	Valve type	kvs m ³ /h / actuator setting	On/Off 230V AC actuator
HDW-100	3.46	0.04	6.23	90	5	15	R3015-P63-B1	0.63	TRY230
HDW-125	4.67	0.05	10.99	90	8	15	R3015-P63-B1	0.63	TRY230
HDW-150	7.67	0.09	7.23	90	10	15	R3015-1-B1	1.0	TRY230
HDW-160	8.33	0.10	8.43	90	13	15	R3015-1-B1	1.0	TRY230
HDW-200	11.11	0.14	14.54	90	10	15	R3015-1P6-B1	1.6	TRY230
HDW-250	18.26	0.22	15.66	90	10	15	R3015-2P5-B1	2.5	TRY230
HDW-315	29.03	0.36	26.79	90	10	15	R3015-4-B1	4.0	TRY230
HDW-400	45.26	0.55	31.86	90	10	20	R3020-6P3-B1	6.3	TRY230
HDW-500	66.68	0.82	40.13	90	22	20	R3020-6P3-B1	6.3	TRY230

Technical specifications

HDW-100			Water temperature on inlet / outlet: 90°C/70°C					Water temperature on inlet / outlet: 80°C/60°C					Water temperature on inlet / outlet: 60°C/40°C				
Air output	Pressure loss	Inlet temperature	Outlet temperature	Heating power	Heating water output	Pressure loss across heater	Outlet temperature	Heating power	Heating water output	Pressure loss across heater	Outlet temperature	Heating power	Heating water output	Pressure loss across heater			
m ³ /h	Pa	°C	°C	kW	l/s	kPa	°C	kW	l/s	kPa	°C	kW	l/s	kPa			
60	3.22	-25	56.20	1.63	0.02	1.53	47.50	1.45	0.02	1.26	28.85	1.08	0.01	0.76			
60	3.30	-15	58.25	1.47	0.02	1.27	49.49	1.29	0.02	1.01	31.04	0.92	0.01	0.57			
60	3.35	-10	59.25	1.39	0.02	1.14	50.43	1.21	0.02	0.90	32.37	0.85	0.01	0.49			
60	3.45	0	61.15	1.23	0.02	0.90	52.20	1.05	0.01	0.67	34.96	0.70	0.01	0.35			
60	3.56	+10	62.93	1.07	0.01	0.69	53.75	0.89	0.01	0.50	37.49	0.56	0.01	0.22			
110	7.65	-25	44.83	2.56	0.03	3.53	37.37	2.29	0.03	2.89	21.97	1.72	0.02	1.76			
110	7.84	-15	48.03	2.32	0.03	2.92	40.55	2.04	0.03	2.33	24.92	1.47	0.02	1.31			
110	7.95	-10	49.60	2.19	0.03	2.63	42.10	1.92	0.02	2.07	26.29	1.34	0.02	1.10			
110	8.16	0	52.68	1.94	0.02	2.10	45.13	1.67	0.02	1.59	28.65	1.06	0.01	0.72			
110	8.41	+10	55.65	1.70	0.02	1.62	48.03	1.41	0.02	1.17	32.22	0.82	0.01	0.46			
170	15.01	-25	36.05	3.46	0.04	6.23	29.55	3.09	0.04	5.09	16.22	2.34	0.03	3.11			
170	15.38	-15	40.14	3.13	0.04	5.15	33.60	2.76	0.03	4.11	20.16	2.00	0.02	2.32			
170	15.58	-10	42.15	2.97	0.04	4.65	35.60	2.59	0.03	3.65	22.06	1.82	0.02	1.96			
170	16.00	0	46.10	2.63	0.03	3.70	39.53	2.25	0.03	2.81	25.72	1.47	0.02	1.31			
170	16.45	+10	49.98	2.29	0.03	2.86	43.36	1.91	0.02	2.03	28.83	1.08	0.01	0.75			

Water heater HDW

Technical specifications

HDW-125			Water temperature on inlet / outlet: 90°C/70°C				Water temperature on inlet / outlet: 80°C/60°C				Water temperature on inlet / outlet: 60°C/40°C			
Air output	Pressure loss	Inlet temperature	Outlet temperature	Heating power	Heating water output	Pressure loss across heater	Outlet temperature	Heating power	Heating water output	Pressure loss across heater	Outlet temperature	Heating power	Heating water output	Pressure loss across heater
m ³ /h	Pa	°C	°C	kW	l/s	kPa	°C	kW	l/s	kPa	°C	kW	l/s	kPa
90	5.76	-25	48.76	2.22	0.03	2.73	40.88	1.98	0.02	2.20	24.49	1.49	0.02	1.34
90	5.95	-15	51.56	2.00	0.02	2.22	43.65	1.76	0.02	1.77	26.92	1.26	0.02	0.99
90	6.05	-10	52.94	1.90	0.02	2.00	44.99	1.66	0.02	1.58	28.00	1.14	0.01	0.83
90	6.25	0	55.62	1.68	0.02	1.60	47.61	1.44	0.01	1.21	30.59	0.92	0.01	0.56
90	6.48	+10	58.19	1.46	0.01	1.23	50.08	1.22	0.01	0.89	33.99	0.73	0.01	0.36
180	16.22	-25	34.90	3.60	0.04	6.70	28.52	3.21	0.03	5.47	15.45	2.43	0.02	3.34
180	16.70	-15	39.10	3.25	0.04	5.54	32.68	2.87	0.03	4.41	19.51	2.08	0.02	2.49
180	16.98	-10	41.16	3.08	0.03	4.99	34.74	2.69	0.03	3.92	21.48	1.90	0.02	2.10
180	17.58	0	45.24	2.73	0.03	3.98	38.79	2.34	0.02	3.02	25.28	1.53	0.01	1.41
180	18.25	+10	49.23	2.38	0.02	3.08	42.74	1.99	0.02	2.22	28.60	1.13	0.01	0.81
270	34.27	-25	26.80	4.67	0.05	10.99	21.29	4.17	0.05	8.96	10.04	3.16	0.03	5.45
270	35.35	-15	31.80	4.22	0.05	9.08	26.26	3.72	0.04	7.22	14.94	2.70	0.03	4.07
270	35.91	-10	34.26	4.00	0.04	8.18	28.71	3.50	0.04	6.41	17.34	2.47	0.03	3.44
270	37.07	0	39.14	3.55	0.04	6.51	33.57	3.04	0.03	4.93	22.06	2.00	0.02	2.32
270	38.38	+10	43.94	3.09	0.03	5.03	38.34	2.58	0.03	3.62	26.54	1.51	0.01	1.37

HDW-150			Water temperature at inlet / outlet: 90°C/70°C				Water temperature at inlet / outlet: 80°C/60°C				Water temperature at inlet / outlet: 60°C/40°C			
Air output	Pressure loss	Inlet temperature	Outlet temperature	Heating power	Heating water output	Pressure loss across heater	Outlet temperature	Heating power	Heating water output	Pressure loss across heater	Outlet temperature	Heating power	Heating water output	Pressure loss across heater
m ³ /h	Pa	°C	°C	kW	l/s	kPa	°C	kW	l/s	kPa	°C	kW	l/s	kPa
130	3.36	-25	56.40	3.53	0.04	1.70	47.76	3.16	0.03	1.40	29.55	2.37	0.02	0.87
130	3.47	-15	58.45	3.19	0.03	1.41	49.76	2.81	0.03	1.14	30.95	2.00	0.02	0.64
130	3.52	-10	59.44	3.02	0.03	1.27	50.72	2.64	0.03	1.01	31.67	1.81	0.02	0.54
130	3.64	0	61.37	2.68	0.03	1.02	52.55	2.29	0.02	0.78	34.35	1.50	0.01	0.38
130	3.77	+10	63.19	2.33	0.02	0.79	54.20	1.94	0.02	0.58	36.99	1.18	0.01	0.25
260	8.81	-25	43.20	5.92	0.07	4.44	35.98	5.29	0.06	3.65	21.17	4.01	0.04	2.27
260	9.11	-15	46.60	5.35	0.07	3.68	39.34	4.72	0.06	2.95	24.38	3.42	0.04	1.70
260	9.26	-10	48.26	5.07	0.06	3.32	40.99	4.44	0.05	2.63	25.91	3.12	0.03	1.44
260	9.58	0	51.54	4.50	0.06	2.66	44.23	3.86	0.04	2.03	28.75	2.51	0.03	0.96
260	9.93	+10	54.71	3.92	0.04	2.06	47.35	3.28	0.04	1.50	30.87	1.83	0.02	0.55
380	15.65	-25	35.52	7.67	0.09	7.23	29.10	6.86	0.08	5.93	16.05	5.20	0.06	3.68
380	16.20	-15	39.68	6.94	0.09	5.99	33.24	6.12	0.07	4.80	20.08	4.45	0.05	2.76
380	16.48	-10	41.72	6.58	0.08	5.41	35.28	5.76	0.07	4.27	22.05	4.07	0.04	2.34
380	17.06	0	45.76	5.83	0.07	4.32	39.29	5.01	0.06	3.30	25.85	3.29	0.04	1.59
380	17.71	+10	49.71	5.09	0.06	3.35	43.21	4.26	0.05	2.44	29.30	2.47	0.03	0.94

Water heater

HDW

Technical specifications

HDW-160			Water temperature at inlet / outlet: 90°C/70°C				Water temperature at inlet / outlet: 80°C/60°C				Water temperature at inlet / outlet: 60°C/40°C			
Air output	Pressure loss	Inlet temperature	Outlet temperature	Heating power	Heating water output	Pressure loss across heater	Outlet temperature	Heating power	Heating water output	Pressure loss across heater	Outlet temperature	Heating power	Heating water output	Pressure loss across heater
m ³ /h	Pa	°C	°C	kW	l/s	kPa	°C	kW	l/s	kPa	°C	kW	l/s	kPa
140	3.70	-25	55.09	3.74	0.04	1.89	46.59	3.35	0.04	1.56	28.78	2.51	0.03	0.97
140	3.82	-15	57.27	3.38	0.04	1.57	48.73	2.98	0.03	1.26	30.43	2.13	0.02	0.71
140	3.88	-10	58.34	3.20	0.03	1.42	49.76	2.80	0.03	1.12	31.01	1.92	0.02	0.59
140	4.01	0	60.40	2.83	0.03	1.13	51.74	2.43	0.02	0.87	33.55	1.58	0.01	0.42
140	4.16	+10	62.36	2.48	0.03	0.88	53.55	2.06	0.02	0.64	36.35	1.24	0.01	0.27
290	10.36	-25	41.00	6.39	0.08	5.12	34.01	5.71	0.07	4.21	19.71	4.33	0.05	2.61
290	10.72	-15	44.62	5.78	0.07	4.24	37.60	5.10	0.06	3.41	23.16	3.70	0.04	1.96
290	10.90	-10	46.39	5.47	0.07	3.83	39.36	4.79	0.06	3.03	24.82	3.38	0.04	1.66
290	11.28	0	49.88	4.85	0.06	3.06	42.82	4.17	0.05	2.34	27.96	2.72	0.03	1.12
290	11.70	+10	53.28	4.24	0.05	2.38	46.17	3.54	0.04	1.73	30.45	2.00	0.02	0.64
430	19.68	-25	33.02	8.33	0.10	8.43	26.87	7.44	0.09	6.91	14.37	5.65	0.07	4.28
430	20.26	-15	37.42	7.53	0.09	6.98	31.25	6.64	0.08	5.59	18.66	4.83	0.06	3.21
430	20.57	-10	39.59	7.13	0.09	6.30	33.41	6.24	0.08	4.98	20.76	4.42	0.05	2.72
430	21.20	0	43.88	6.33	0.08	5.04	37.68	5.44	0.07	3.84	24.85	3.58	0.04	1.85
430	21.92	+10	48.07	5.52	0.07	3.90	41.85	4.62	0.06	2.84	28.65	2.71	0.03	1.11

HDW-200			Water temperature at inlet / outlet: 90°C/70°C				Water temperature at inlet / outlet: 80°C/60°C				Water temperature at inlet / outlet: 60°C/40°C			
Air output	Pressure loss	Inlet temperature	Outlet temperature	Heating power	Heating water output	Pressure loss across heater	Outlet temperature	Heating power	Heating water output	Pressure loss across heater	Outlet temperature	Heating power	Heating water output	Pressure loss across heater
m ³ /h	Pa	°C	°C	kW	l/s	kPa	°C	kW	l/s	kPa	°C	kW	l/s	kPa
225	7.13	-25	46.09	5.34	0.07	3.66	38.55	4.77	0.06	3.01	23.07	3.61	0.04	1.87
225	7.37	-15	49.19	4.83	0.06	3.03	41.63	4.26	0.05	2.44	25.95	3.08	0.04	1.40
225	7.49	-10	50.71	4.57	0.06	2.74	43.13	4.00	0.05	2.17	27.30	2.81	0.03	1.18
225	7.75	0	53.70	4.05	0.05	2.19	46.07	3.48	0.04	1.68	29.71	2.24	0.03	0.79
225	8.03	+10	56.58	3.54	0.04	1.70	48.89	2.95	0.04	1.24	32.15	1.68	0.02	0.47
455	21.84	-25	31.88	8.64	0.11	9.03	25.85	7.72	0.09	7.41	13.60	5.86	0.07	4.58
455	22.50	-15	36.39	7.81	0.10	7.48	30.35	6.89	0.08	5.99	18.01	5.02	0.06	3.44
455	22.84	-10	38.62	7.40	0.09	6.75	32.56	6.48	0.08	5.33	20.17	4.59	0.06	2.92
455	23.55	0	43.02	6.57	0.08	5.39	36.94	5.64	0.07	4.11	24.39	3.72	0.05	1.98
455	24.35	+10	47.33	5.73	0.07	4.18	41.22	4.79	0.06	3.04	28.34	2.82	0.03	1.19
680	45.74	-25	23.95	11.11	0.14	14.54	18.77	9.93	0.12	11.90	8.25	7.54	0.09	7.33
680	47.22	-15	29.24	10.05	0.12	12.03	24.04	8.87	0.11	9.61	13.46	6.46	0.08	5.50
680	47.99	-10	31.85	9.52	0.12	10.86	26.64	8.33	0.10	8.55	16.03	5.92	0.07	4.67
680	49.57	0	37.03	8.45	0.10	8.66	31.80	7.25	0.09	6.59	21.09	4.81	0.06	3.18
680	51.37	+10	42.13	7.37	0.09	6.70	36.88	6.17	0.08	4.86	25.99	3.67	0.04	1.93

Water heater HDW

Technical specifications

HDW-250			Water temperature at inlet / outlet: 90°C/70°C				Water temperature at inlet / outlet: 80°C/60°C				Water temperature at inlet / outlet: 60°C/40°C			
Air output	Pressure loss	Inlet temperature	Outlet temperature	Heating power	Heating water output	Pressure loss across heater	Outlet temperature	Heating power	Heating water output	Pressure loss across heater	Outlet temperature	Heating power	Heating water output	Pressure loss across heater
m³/h	Pa	°C	°C	kW	l/s	kPa	°C	kW	l/s	kPa	°C	kW	l/s	kPa
360	6.26	-25	49.07	8.90	0.11	4.07	41.38	7.98	0.10	3.37	25.68	6.09	0.07	2.14
360	6.47	-15	51.98	8.06	0.10	3.38	44.27	7.13	0.09	2.74	28.42	5.22	0.06	1.62
360	6.57	-10	53.41	7.64	0.09	3.06	45.68	6.71	0.08	2.45	29.73	4.78	0.06	1.38
360	6.80	0	56.20	6.79	0.08	2.46	48.44	5.85	0.07	1.91	32.15	3.88	0.05	0.95
360	7.04	+10	58.90	5.94	0.07	1.93	51.08	4.99	0.06	1.42	33.90	2.90	0.04	0.56
710	17.58	-25	35.08	14.23	0.17	9.80	28.82	12.75	0.16	8.08	16.15	9.75	0.12	5.09
710	18.10	-15	39.35	12.89	0.16	8.14	33.08	11.41	0.14	6.56	20.33	8.38	0.10	3.85
710	18.37	-10	41.46	12.22	0.15	7.36	35.17	10.73	0.13	5.85	22.38	7.69	0.10	3.29
710	18.92	0	45.62	10.87	0.13	5.91	39.31	9.36	0.11	4.54	26.38	6.28	0.08	2.27
710	19.56	+10	49.68	9.51	0.12	4.60	43.35	7.99	0.10	3.39	30.18	4.83	0.06	1.41
1050	36.15	-25	27.11	18.26	0.22	15.66	21.68	16.35	0.20	12.89	10.78	12.50	0.15	8.07
1050	37.29	-15	32.15	16.54	0.20	13.00	26.70	14.63	0.18	10.45	15.66	10.75	0.13	6.10
1050	37.89	-10	34.64	15.68	0.19	11.75	29.18	13.76	0.17	9.32	18.11	9.87	0.12	5.21
1050	39.12	0	39.57	13.94	0.17	9.42	34.09	12.01	0.15	7.22	22.93	8.07	0.10	3.60
1050	40.50	+10	44.41	12.19	0.15	7.33	38.92	10.25	0.13	5.37	27.61	6.24	0.08	2.24

HDW-315			Water temperature at inlet / outlet: 90°C/70°C				Water temperature at inlet / outlet: 80°C/60°C				Water temperature at inlet / outlet: 60°C/40°C			
Air output	Pressure loss	Inlet temperature	Outlet temperature	Heating power	Heating water output	Pressure loss across heater	Outlet temperature	Heating power	Heating water output	Pressure loss across heater	Outlet temperature	Heating power	Heating water output	Pressure loss across heater
m³/h	Pa	°C	°C	kW	l/s	kPa	°C	kW	l/s	kPa	°C	kW	l/s	kPa
560	6.36	-25	49.59	13.94	0.17	6.77	41.94	12.51	0.15	5.62	26.45	9.61	0.12	3.61
560	6.57	-15	52.52	12.64	0.16	5.64	44.86	11.20	0.14	4.58	29.25	8.28	0.10	2.75
560	6.68	-10	53.95	11.98	0.15	5.11	46.28	10.54	0.13	4.10	30.60	7.60	0.09	2.36
560	6.91	0	56.77	10.67	0.13	4.12	49.07	9.22	0.11	3.20	33.17	6.23	0.08	1.64
560	7.16	+10	59.48	9.35	0.11	3.23	51.74	7.89	0.10	2.40	35.39	4.80	0.06	1.03
1120	18.40	-25	35.11	22.47	0.28	16.52	28.93	20.15	0.25	13.66	16.44	15.48	0.18	8.68
1120	18.94	-15	39.43	20.37	0.25	13.74	33.23	18.05	0.22	11.11	20.68	13.35	0.16	6.60
1120	19.23	-10	41.56	19.32	0.24	12.44	35.35	16.99	0.21	9.93	22.76	12.27	0.15	5.65
1120	19.81	0	45.76	17.19	0.21	10.00	39.53	14.85	0.18	7.79	26.84	10.08	0.12	3.94
1120	20.48	+10	49.87	15.07	0.18	7.82	43.62	12.71	0.16	5.79	30.76	7.84	0.10	2.49
1680	38.82	-25	26.79	29.03	0.36	26.79	21.45	26.03	0.32	22.08	10.69	20.00	0.24	13.95
1680	40.06	-15	31.90	26.32	0.32	22.27	26.54	23.31	0.28	17.94	15.73	17.24	0.21	10.59
1680	40.70	-10	34.42	24.96	0.31	20.14	29.06	21.95	0.27	16.02	18.22	15.85	0.19	9.07
1680	42.02	0	39.42	22.21	0.27	16.17	34.04	19.18	0.23	12.45	23.13	13.03	0.16	6.31
1680	43.52	+10	44.33	19.46	0.24	12.61	38.94	16.40	0.20	9.30	27.91	10.15	0.12	3.99

Technical specifications

HDW-400			Water temperature at inlet / outlet: 90°C/70°C				Water temperature at inlet / outlet: 80°C/60°C				Water temperature at inlet / outlet: 60°C/40°C			
Air output	Pressure loss	Inlet temperature	Outlet temperature	Heating power	Heating water output	Pressure loss across heater	Outlet temperature	Heating power	Heating water output	Pressure loss across heater	Outlet temperature	Heating power	Heating water output	Pressure loss across heater
m³/h	Pa	°C	°C	kW	l/s	kPa	°C	kW	l/s	kPa	°C	kW	l/s	kPa
900	7,17	-25	48,17	21,98	0,27	8,14	40,69	19,73	0,24	6,75	25,51	15,17	0,18	4,31
900	7,41	-15	51,27	19,93	0,24	6,78	43,76	17,67	0,22	5,50	28,48	13,07	0,16	3,28
900	7,53	-10	52,78	18,91	0,23	6,14	45,27	16,64	0,20	4,92	29,92	12,02	0,15	2,81
900	7,79	0	55,76	16,84	0,21	4,95	48,21	14,56	0,18	3,84	32,66	9,86	0,12	1,96
900	8,07	+10	58,63	14,77	0,18	3,88	51,05	12,47	0,15	2,88	35,07	7,61	0,09	1,22
1800	21,46	-25	33,54	35,16	0,43	19,74	27,52	31,54	0,39	16,27	15,37	24,24	0,29	10,27
1800	22,10	-15	38,02	31,89	0,39	16,41	31,98	28,25	0,34	13,22	19,77	20,91	0,25	7,80
1800	22,44	-10	40,23	30,24	0,37	14,85	34,18	26,60	0,32	11,81	21,94	19,23	0,23	6,68
1800	23,13	0	44,59	26,93	0,33	11,93	38,53	23,26	0,28	9,18	26,18	15,80	0,19	4,65
1800	23,92	+10	48,87	23,61	0,29	9,31	42,78	19,91	0,24	6,87	30,27	12,31	0,15	2,94
2700	45,23	-25	25,24	45,26	0,55	31,86	20,06	40,59	0,50	26,19	9,63	31,19	0,38	16,44
2700	46,68	-15	30,50	41,04	0,50	26,46	25,31	36,36	0,44	21,27	14,82	26,89	0,33	12,46
2700	47,45	-10	33,10	38,92	0,48	23,93	27,90	34,22	0,42	18,97	17,39	24,73	0,30	10,66
2700	49,00	0	38,26	34,65	0,42	19,20	33,04	29,92	0,37	14,73	22,46	20,33	0,25	7,41
2700	50,77	+10	43,32	30,35	0,37	14,95	38,09	25,59	0,31	10,98	27,41	15,85	0,19	4,68

HDW-			Water temperature at inlet / outlet: 90°C/70°C				Water temperature at inlet / outlet: 80°C/60°C				Water temperature at inlet / outlet: 60°C/40°C			
Air output	Pressure loss	Inlet temperature	Outlet temperature	Heating power	Heating water output	Pressure loss across heater	Outlet temperature	Heating power	Heating water output	Pressure loss across heater	Outlet temperature	Heating power	Heating water output	Pressure loss across heater
m³/h	Pa	°C	°C	kW	l/s	kPa	°C	kW	l/s	kPa	°C	kW	l/s	kPa
1400	6,02	-25	51,55	35,77	0,44	12,54	43,87	37,18	0,38	10,48	28,38	24,94	0,30	6,88
1400	6,22	-15	54,40	32,48	0,40	10,48	46,70	28,87	0,35	8,58	31,14	21,58	0,26	5,29
1400	6,32	-10	55,79	30,82	0,38	9,52	48,09	27,21	0,33	7,70	32,48	19,89	0,24	4,56
1400	6,53	0	58,53	27,50	0,34	7,71	50,79	23,86	0,29	6,05	35,05	16,46	0,20	3,24
1400	6,77	+10	61,16	24,18	0,30	6,08	53,39	20,50	0,25	4,59	37,41	12,95	0,16	2,11
2500	14,16	-25	39,23	53,59	0,66	26,62	32,74	48,17	0,59	22,14	19,70	37,28	0,45	14,35
2500	14,65	-15	43,24	48,65	0,60	22,23	36,73	43,21	0,53	18,09	23,63	32,26	0,39	11,00
2500	14,90	-10	45,20	46,17	0,57	20,15	38,69	40,72	0,50	16,20	25,56	29,73	0,36	9,48
2500	15,42	0	49,09	41,18	0,50	16,28	42,56	35,69	0,44	12,69	29,34	24,60	0,30	6,71
2500	16,00	+10	52,88	36,18	0,44	12,80	46,33	30,65	0,37	9,58	32,98	19,38	0,23	4,35
3500	25,78	-25	32,10	66,68	0,82	40,13	26,31	59,92	0,73	33,28	14,70	46,35	0,56	21,43
3500	26,57	-15	36,77	60,54	0,74	33,46	30,97	53,75	0,66	27,16	19,30	40,10	0,49	16,40
3500	26,98	-10	39,07	57,45	0,70	30,33	33,27	50,65	0,62	24,32	21,57	36,95	0,45	14,11
3500	27,82	0	43,63	51,23	0,63	24,47	37,80	44,38	0,54	19,01	26,04	30,56	0,31	9,97
3500	28,78	+10	48,09	44,99	0,55	19,20	42,25	38,08	0,46	14,31	30,39	24,07	0,29	6,45

Accessories for HDW water heaters

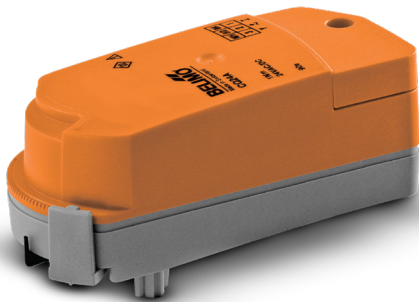
C2..Q-.. 2-way valve



Ball valve, adjustable kvs, brass body and spindle. Designed for operation with on/off rotary actuators and three-position control. Works in either direction of flow.

Type	DN (mm)	Female thread Rp (inch)	Kvs (adjustable)	PN
C215Q-J	15	1/2	0.4-4.8	16
C220Q-K	20	3/4	0.5-8	16

CQ230A ON/OFF actuator for C2..Q- 2-way valves



230 V rotary actuator; on/off or 3-position control. Adjusts the kvs setting in C2..Q-.. valves.

Power supply	Power input, running/standby	Torque //	Travel time	Range of motion
230V	1 W / 0,7 W	1 Nm	75 s	90°

R3..-xx-B.. 3-way valve



Control ball valve for analogue-based adjustment of water flow rate in heating systems. The valve is operated by a rotary actuator.

Type	DN (mm)	Female thread Rp (inch)	Kvs (adjustable)	PN
R3015-P63-B1	15	1/2	0.63	16
R3015-1-B1	15	1/2	1	16
R3015-1P6-B1	15	1/2	1.6	16
R3015-2P5-B1	15	1/2	2.5	16
R3015-4-B1	15	1/2	4	16
R3020-6P3-B1	20	3/4	6.3	16

TRY230 ON/OFF actuator for R3..xx-B.. 3-way valves



230 V on-off rotary actuator. Allows manual switching.

Power supply	Power input	Torque //	Travel time	Range of motion
230V	1 W	2 Nm	35 s	90°

LCA-D indoor thermostat



Room thermostat intended for operation of 2-way and 3-way valves installed with HDW water heaters using 230 V signals.

Power supply: 230V / 50-60 Hz

Output switching contact: 230V / 2A, normally closed contact

Protection rating: IP30

Temperature control range: +5 to +30°C